



Portfolio Manager's View

22 September 2021

Fund Management Department

Regional

1. This September FOMC Meeting has significant implications. US Treasury Secretary Janet Yellen remains hostage to a Congress impasse that may see the US Government default on its debt obligations as early as in October and risk a financial crisis. Therefore, any hawkish tilt at September's FOMC, whether an asset purchase taper and/or an updated earlier dot plot lift off, even if tempered by a more dovish rhetoric in Chair's Jerome Powell's press conference may not sit well with nervy investors right now. Any debt ceiling resolution is likely to run down to the last minute. In Janet Yellen's words to Congress; "We are just now emerging from crisis. We must not plunge ourselves back into an entirely avoidable one." If the US Government needs to issue more debt, who is going to be that buyer of last resort if the US Federal Reserve slows her purchases? The US Federal Reserve risks creating another avoidable mistake of her own too.
2. This week, Asian equity markets have suffered from the fall-out of the China Evergrande Group, with concerns that Evergrande's collapse may become a systemic risk for the Chinese banking system. We believe that the Chinese Government will step-in to prevent a contagion. This is a case of the Chinese

-continued

Central Bank PBOC having tightened too quickly and aggressively to rein-in the overleveraged corporate sector. The reserve ratio requirement cut for banks in July is just the start of China's monetary easing cycle. More monetary easing measures will kick in; however, there is a lag in filter through impact. Newsflow may continue to be negative until it gets better. The US Federal Reserve will need to be mindful that as she looks to rein-in financial excesses that this does not bring down the still fragile real economy.

Malaysia

1. The KLCI closed at 1,548 @ 17.09.21, an increase of +1.6% MoM. Last week, Technology (+0.4%) was the best performing sector. In contrast, Healthcare (-5.0%), Construction (-3.7%) and Metals & Mining (-3.6%) were the worst performing sectors. Year-to-date @ 17.8.2021, the KLCI has retreated by -4.4%.
2. Budget 2022 in October is likely to be expansionary, in our view. The key beneficiaries may be : (a) Construction and Materials sectors. More funds are likely to be allocated towards construction & infrastructure projects on top of an unutilized allocation of approximately RM16 billion from Budget 2021 (b) Consumer sector. The Budget may propose the extension of incentives such as Home Ownership Campaign (HOC) on Property and tax exemptions on Automotive. In tandem with the economic recovery and reopening, private consumption is forecast to grow at a stronger rate of +7.5% in 2022 compared to the growth rate of +3.9% in 2021.
3. China continues to crackdown on carbon-emitting sectors as part of its decarbonization policy. We are seeing a tighter supply for certain materials such as coal, steel and polymers which has caused local prices to rise significantly. This is likely to continue into Q2 2022 as outlined by a report from China's Ministry of

-continued

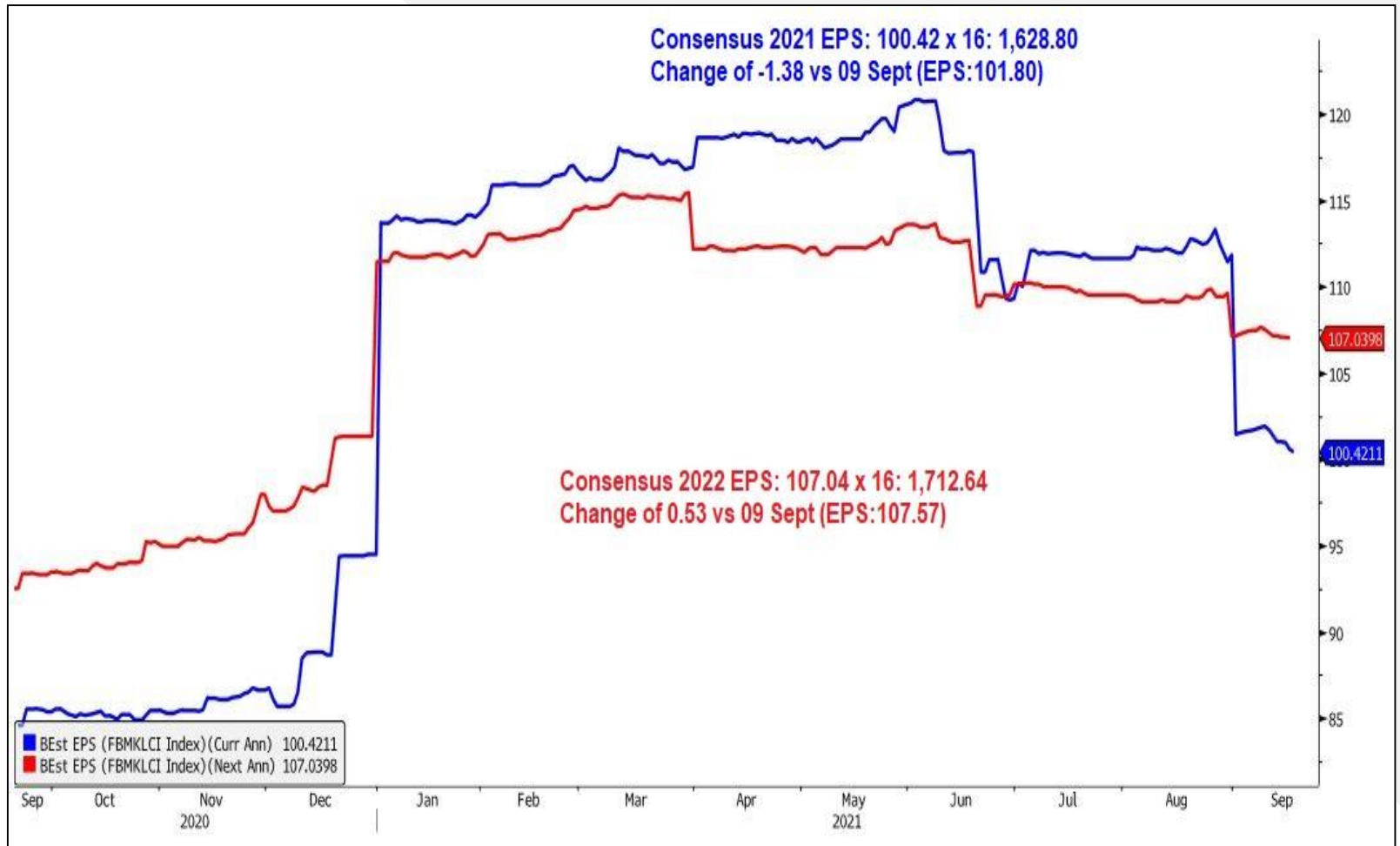
Environment. In the short term, the price increases will moderate as demand is likely to be impacted by the potential ramifications of Evergrande's bankruptcy on the economy and business sentiment. In the longer-term, the outlook is still positive for regional materials players as China may have to import materials from overseas to satisfy its local demand moving forward.

4. Glove stocks weighed down on the market this week. The renewed pressure was sparked by Top Glove's FY21 (Aug) results on 17.9.2021 was 9% below consensus forecast. Importantly, TOPG MK's management warned that glove prices are expected to weaken 8-10% month on-month until Jan-2020. Currently, the Big 4 glove players are trading at 12-month lows and have given up RM 4.2 bil of market capitalization this week.
5. Foreigners have been net buyers of Malaysia equities for 6 consecutive weeks. Between Aug 9 and Sep 17, RM2.33 bil flowed into the market. This helped to offset the selling pressure from local funds. The latter has been persistent net sellers year-to-date @ 17.9.2021. Local funds have net sold RM 9.1 bil worth of equities this year.

-continued

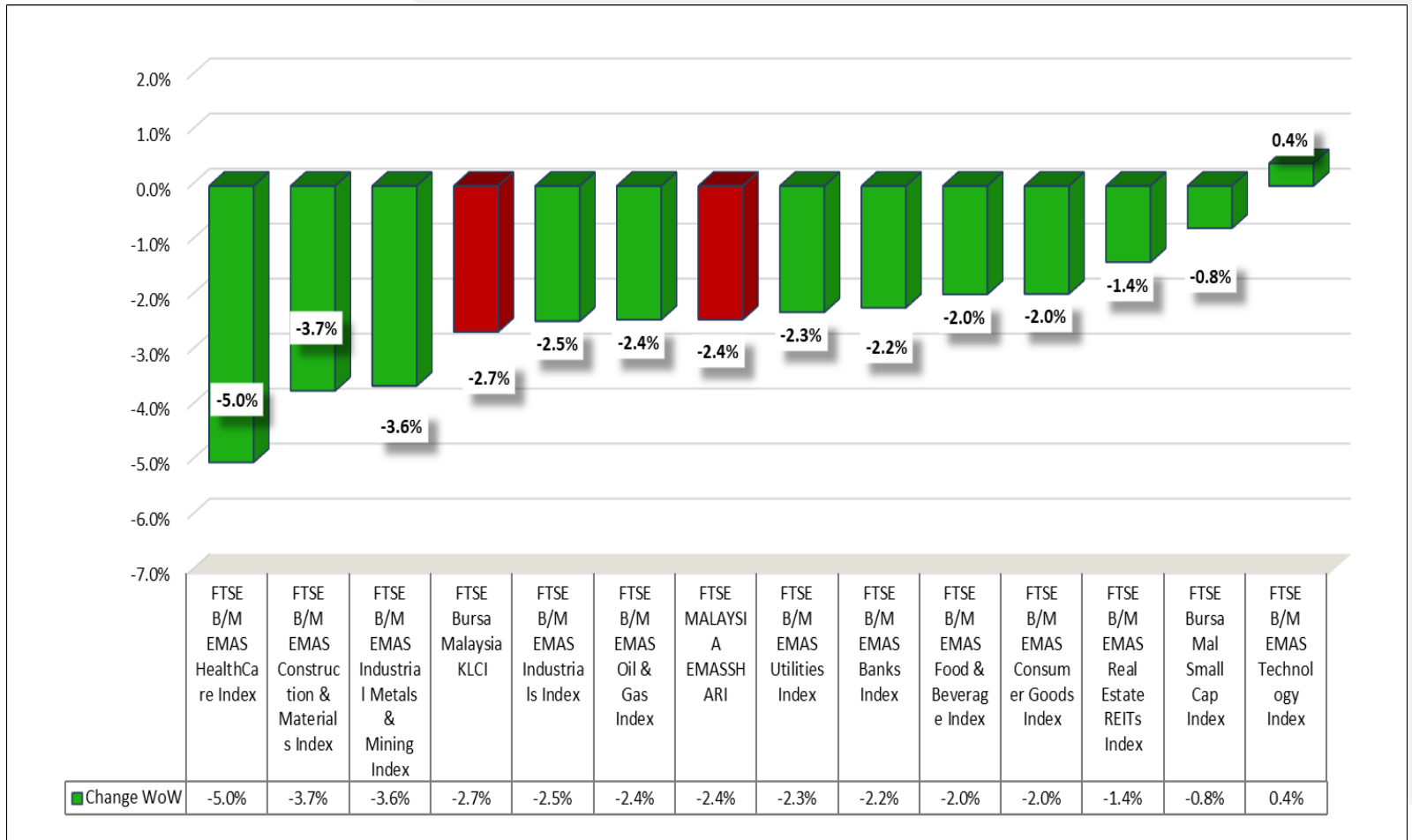
6. Valuation remains the market's biggest positive. Based on KLCI at 1,548 @ 17.9.2021 and assuming a market eps integer of 100/107 for 2021/2022, the market is trading at a PER of 15.5x/14.5x respectively. This is approximately -1 standard deviation below its long-term mean of 16x. The fallout in China due to Evergrande's indebtedness and government crackdown on the internet economy are likely to be incrementally positive for ASEAN (including Malaysia) given the likely diversion of investor flows. In Malaysia, this comes at a time when Covid-19 cases have peaked. As at 22.9.2021, 57.5% of the country's population have been fully vaccinated (2 doses). An estimated 80% of the adult population (18.8 individuals) are fully inoculated (2 doses). As expected, the market's attention is quickly shifting from Covid-19 cases to economic resumption.

Exhibit 1 : FBMKLCI Consensus Earnings Per Share (EPS) @ 17.09.21



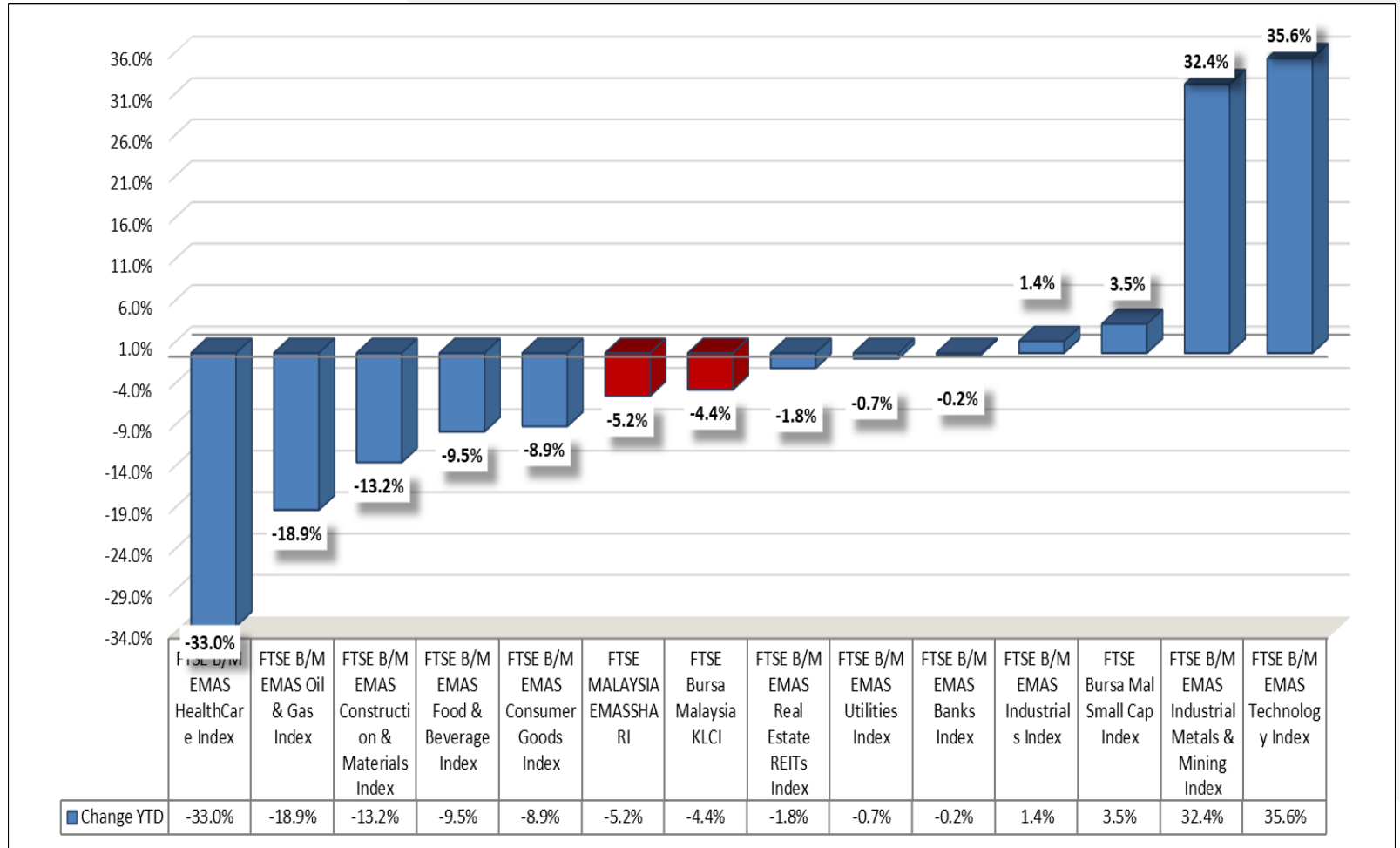
(Source: Bloomberg)

Exhibit 2 : Sector Performances (Week-on-Week) @ 17.09.21



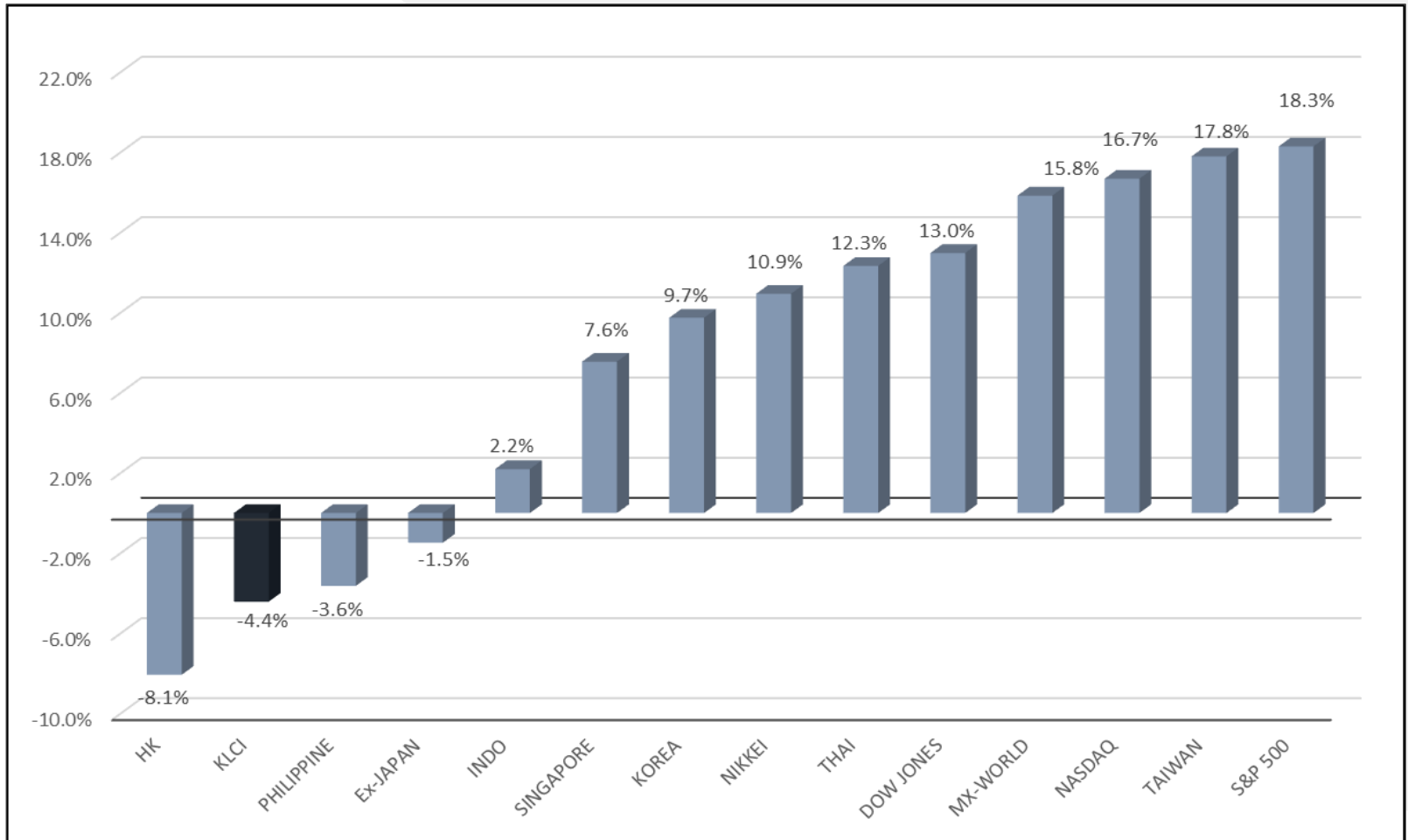
(Source: Bloomberg)

Exhibit 3 : Sector Performances (Year-to-Date) @ 17.09.21



(Source: Bloomberg)

Exhibit 4 : Performance of Indices (Year-to-Date) @ 17.09.21



(Source: Bloomberg)

Disclaimer

This document is prepared for general circulation and for information purposes only and under no circumstances should it be considered or intended as an offer to sell or a solicitation of an offer to buy the securities referred to herein. Investors should note that values of such securities, if any, may fluctuate and that each security's price or value may rise or fall. Opinions or recommendations contained herein are in form of technical ratings and fundamental ratings. Fundamental ratings include various financial data from the income statement, balance sheet, and cash flow statement items such as sales, profit, all important ratios, cash flows, working capital, cash conversion cycle and etc. over the past quarters and years. Technical ratings may differ from fundamental ratings as technical valuations apply different methodologies and are purely based on price and volume-related information extracted from the relevant jurisdiction's stock exchange in the equity analysis. Accordingly, investors' returns may be less than the original sum invested. Past performance is not indicative of future performance. This document is not intended to provide personal investment advice and does not take into account the specific investment objectives, the financial situation and the particular needs of persons who may receive or read this document. Investors should therefore seek financial, legal and other advice regarding the appropriateness of investing in any securities or the investment strategies discussed or recommended in this document. The information contained herein has been obtained from sources believed to be reliable but such sources have not been independently verified by Apex Investment Services Berhad ("AISB") and consequently no representation is made as to the accuracy or completeness of this document by AISB and it should not be relied upon as such. Accordingly, AISB and its officers, directors, associates, connected parties and/or employees (collectively, "Representatives") shall not be liable for any direct, indirect or consequential losses or damages that may arise from the use or reliance of this document. Any information, opinions or recommendations contained herein are subject to change at any time, without prior notice. This document may contain forward-looking statements which are often but not always identified by the use of words such as "anticipate", "believe", "estimate", "intend", "plan", "expect", "forecast", "predict" and "project" and statements that an event or result "may", "will", "can", "should", "could" or "might" occur or be achieved and other similar expressions. Such forward-looking statements are based on assumptions made and information currently available to us and are subject to certain risks and uncertainties that could cause the actual results to differ materially from those expressed in any forward-looking statements. Readers are cautioned not to place undue relevance on these forward-looking statements. AISB expressly disclaims any obligation to update or revise any such forward-looking statements to reflect new information, events or circumstances after the date of this publication or to reflect the occurrence of unanticipated events. AISB and its officers, directors and employees, including persons involved in the preparation or issuance of this document, may, to the extent permitted by law, from time to time participate or invest in financing transactions with the issuer(s) of the securities mentioned in this document, perform services for or solicit business from such issuers, and/or have a position or holding, or other material interest or effect transactions, in such securities or options thereon, or other investments related thereto. In addition, it may make markets in the securities mentioned in the material presented in this document. One or more directors, officers and/or employees of AISB may be a director of the issuers of the securities mentioned in this document to the extent permitted by law. This document is prepared for the use of AISB clients, consultants or Representatives and may not be reproduced, altered in any way, transmitted to, copied or distributed to any other party in whole or in part in any form or manner without the prior express written consent of AISB. AISB and its Representatives accepts no liability whatsoever for the actions of third parties in this respect. This document is not directed to or intended for distribution to or use by any person or entity who is a citizen or resident of or located in any locality, state, country or other jurisdiction where such distribution, publication, availability or use would be contrary to law or regulation. This document is for distribution only under such circumstances as may be permitted by applicable law. The securities described herein may not be eligible for sale in all jurisdictions or to certain categories of investors. Without prejudice to the foregoing, the reader is to note that additional disclaimers, warnings or qualifications may apply based on geographical location of the person or entity receiving this document.

This document has not been reviewed by the Securities Commission Malaysia ("SC"), Federation of Investment Managers Malaysia ("FIMM") and Employees Provident Fund ("EPF"). The SC, FIMM and EPF are not liable for this document and are not in any way associated with this document. The SC, FIMM and EPF are not responsible for the contents herein and do not make any representation on the accuracy or completeness of this document, either in whole or in part.